

DURDEN & HUNT

INTERNATIONAL



Taeping Street, Isle Of Dogs E14

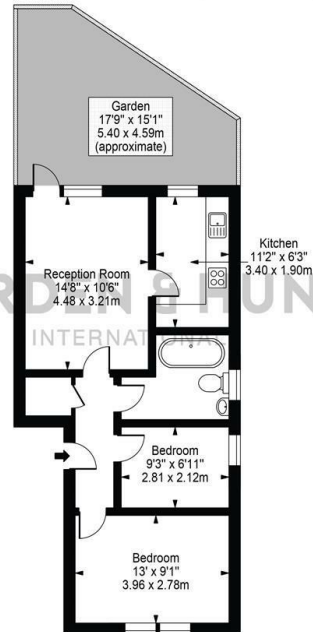
£2,100 Per Calendar Month

- Vibrant Location
- Two Bedrooms
- Ground Floor Apartment
- Excellent Transport Links
- Ideally Located For Local Amenities
- Modern Kitchen
- Private Patio Garden
- Contemporary Family Bathroom
- Reception Room

1 High Street, Wanstead, E11 2AA
0208 150 7574

wanstead@durdenandhunt.co.uk
<https://www.durdenandhunt.co.uk/>

Taeping Street
Approx. Gross Internal Area 558 Sq Ft - 51.81 Sq M



Ground Floor
For Illustration Purposes Only - Not To Scale

This floor plan should be used as a general outline for guidance only and does not constitute in whole or in part an offer or contract. Any intending purchaser or lessee should satisfy themselves by inspection, searches, enquiries and full survey as to the correctness of each statement. Any areas, measurements or distances quoted are approximate and should not be used to value a property or be the basis of any sale or let.

Viewings

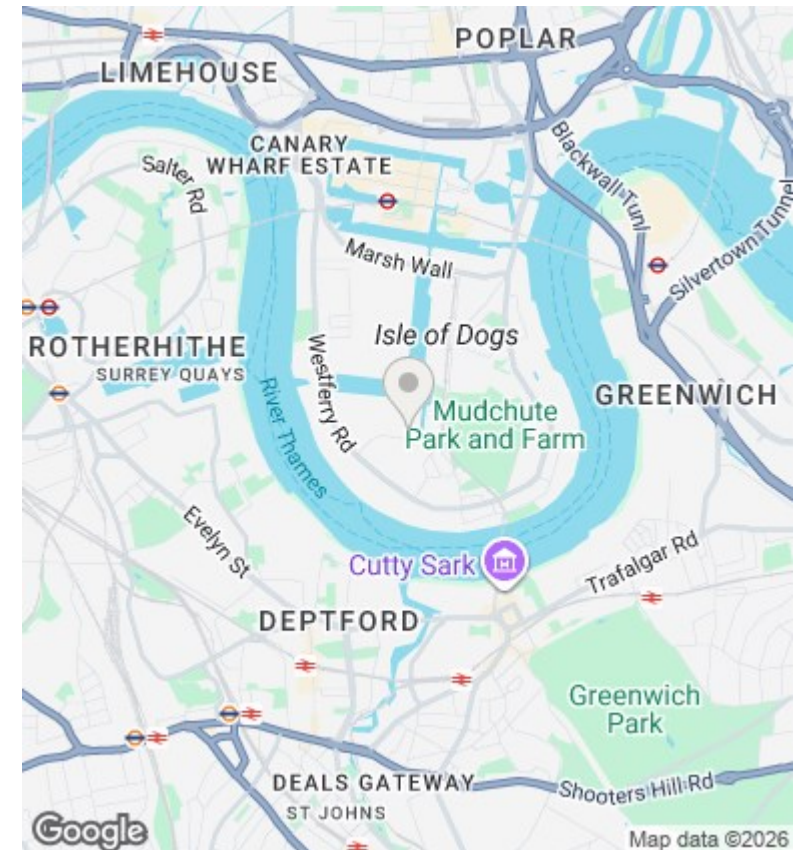
Viewings by arrangement only. Call 0208 150 7574 to make an appointment.

Council Tax Band

D

EPC Rating:

D



| Energy Efficiency Rating | | |
|---|-------------------------|-----------|
| | Current | Potential |
| Very energy efficient - lower running costs | | |
| (92 plus) A | | |
| (81-91) B | | |
| (69-80) C | | 75 |
| (55-68) D | 55 | |
| (39-54) E | | |
| (21-38) F | | |
| (1-20) G | | |
| Not energy efficient - higher running costs | | |
| England & Wales | EU Directive 2002/91/EC | |